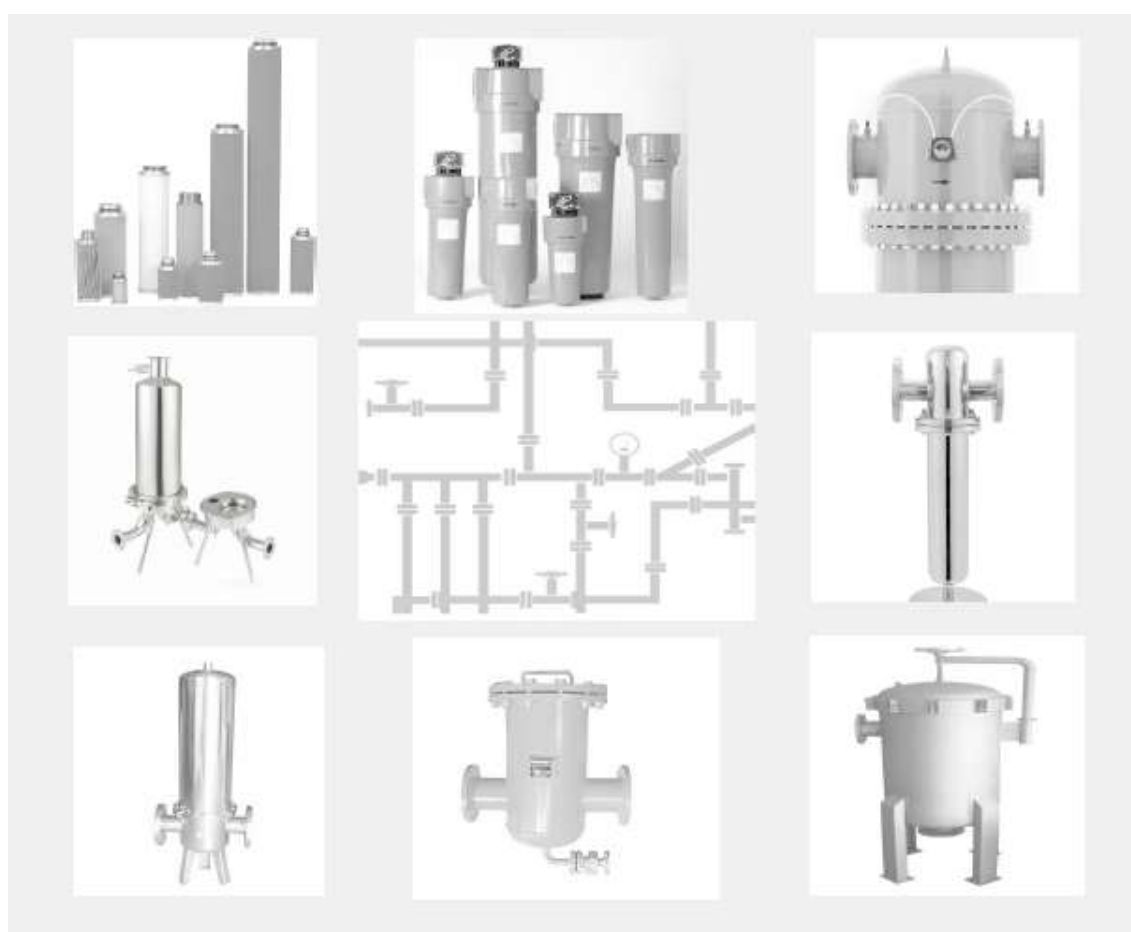




WUXI NICEAIR INDUSTRY  
PURIFICATION EQUIPEMNT CO.,LTD.



*Just for your niceair*

[www.niceair.cn](http://www.niceair.cn)



FOCUS ON THE DEVELOPMENT AND MANUFACTURE  
OF INDUSTRIAL COMPRESSED AIR PURIFICATION EQUIPMENT



Factory display

We are the manufacturer for filters and filter elements from China. Our factory was founded in 2010. Since the establishment of the factory. We have been committed to solve the problem of industrial purification for customers. To provide customers with the best purification solution, this is always our purpose.

Our main products include:

- Compressed air filter,
- Compressed air filter element
- vacuum pumps filter element
- Cyclone separation filter
- Gas drying equipment,
- High pressure filter,
- Stainless steel gas filter,
- Stainless steel liquid filter
- Natural gas filter
- Bag filter
- Muffler

• We can manufacture products based on customer drawings. Or design and manufacture purification products according to customers' requirements

After years of efforts. We have accumulated a wealth of product design and manufacturing experience.

We are confident to help customers improve product quality and reduce costs.

## NATURAL GAS FILTER

### Product profile

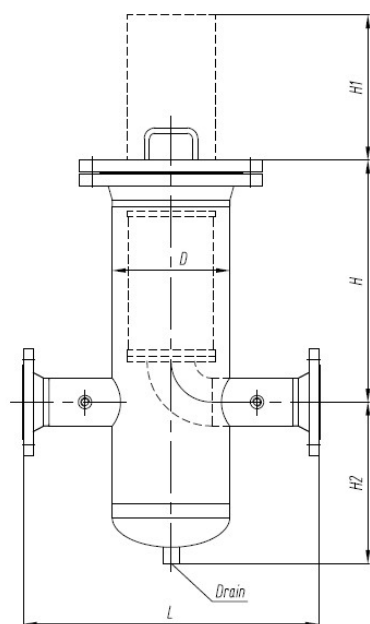
Many gas lines have oil and water in mist or droplet form that, along with solid contaminants such as pipe scale, dirt, and rust, will damage or even destroy your downstream equipment. Use the filter, and you will remove all forms of moisture and dry contamination, lengthening the life of your equipment and saving thousands of dollars in maintenance costs.

### Technical parameters

- Working pressure: 0.3~ 9.9MPa
- Filtration precision: ~0.01um
- Residual oil content: ~0.001ppm
- Interface form: Screw thread. Flange
- INLET&OUTLET: DN15~DN300
- The flange standard: HG GB JB NB
- Working temperature:  $\leq 75^{\circ}\text{C}$
- Filter element material: Fiberglass. SS304. SS316. Polyester. Polypropylene. Metal sintered filter element
- Filter housing material: Cast aluminium. Carbon steel. SS304, SS316L
- Installation directions: horizontal or vertical

### Application field

- Natural gas pipeline
- Natural gas filling station

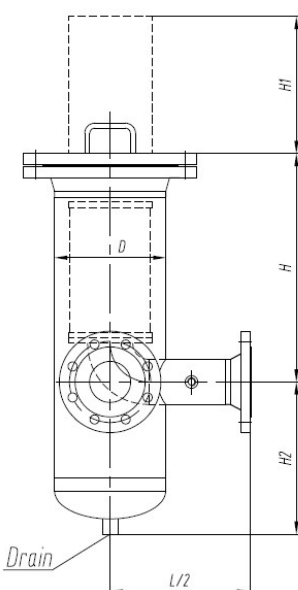


### TECHNICAL PARAMETERS

Working Medium	Natural gas\Town gas\Non corrosive gases
Working pressure	<10Mpa
Filter housing material	CS \ SS.....
Filtration Grade	1-3-10-50µm.....
Filter efficiency	99.90%
Filter element material	Polyester fibre / SS.....
Working temperature	(-20℃)-(+60℃)

### FILTER-A series

Model	Connection	D	L	H	H1	H2	Element Model	Element QTY	Drain
NA-A25x-16	DN25	100	400	250	120	200	G0.5x	1	DN15
NA-A32-16	DN32	100	400	300	120	200	G0.5x	1	DN15
NA-A40x-16	DN40	125	450	300	165	200	G1.0x	1	DN15
NA-A50-16	DN50	125	450	300	165	200	G1.0x	1	DN15
NA-A65-16	DN65	150	550	350	210	250	G1.5x	1	DN25
NA-A80-16	DN80	200(150)	550	350	210	250	G1.5x	1	DN25
NA-A100-16	DN100	200(250)	600	450	270	300	G2.0x	1	DN25
NA-A125-16	DN125	250(300)	700	500	285	400	G2.5x	1	DN25
NA-A150-16	DN150	300(400)	800	550	320	400	G3.0x	1	DN25
NA-A200-16	DN200	400(450)	1000	700	415	550	G4.0x	1	DN50
NA-A250-16	DN250	500(550)	1200	800	470	650	G5.0x	1	DN50
NA-A300-16	DN300	600(650)	1300	1000	625	700	G6.0x	1	DN50

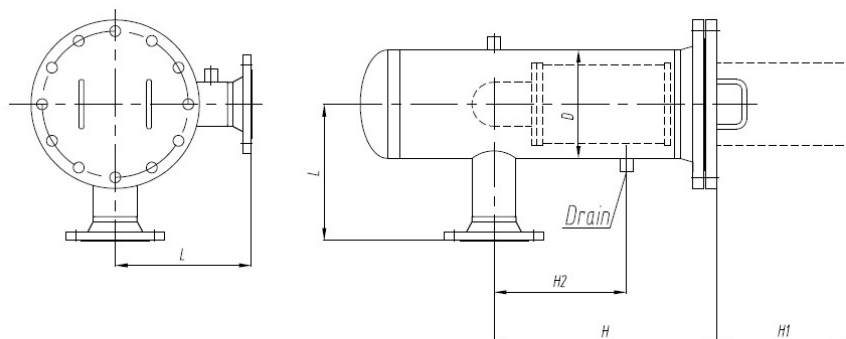


### TECHNICAL PARAMETERS

Working Medium	Natural gas\Town gas\Non corrosive gases
Working pressure	<10Mpa
Filter housing material	Carbon steel \ SS.....
Filtration Grade	1-3-10-50µm.....
Filter efficiency	99.90%
Filter element material	CS \ SS.....
Working temperature	(-20℃)-(+60℃)

### FILTER-B series

Model	Connection	D	L	H	H1	H2	Element Model	Element QTY	Drain
NA-B25x-16	DN25	100	400	250	120	200	G0.5x	1	DN15
NA-B32-16	DN32	100	400	300	120	200	G0.5x	1	DN15
NA-B40x-16	DN40	125	450	300	165	200	G1.0x	1	DN15
NA-B50-16	DN50	125	450	300	165	200	G1.0x	1	DN15
NA-B65-16	DN65	150	550	350	210	250	G1.5x	1	DN25
NA-B80-16	DN80	200(150)	550	350	210	250	G1.5x	1	DN25
NA-B100-16	DN100	200(250)	600	450	270	300	G2.0x	1	DN25
NA-B125-16	DN125	250(300)	700	500	285	400	G2.5x	1	DN25
NA-B150-16	DN150	300(400)	800	550	320	400	G3.0x	1	DN25
NA-B200-16	DN200	400(450)	1000	700	415	550	G4.0x	1	DN50
NA-B250-16	DN250	500(550)	1200	800	470	650	G5.0x	1	DN50
NA-B300-16	DN300	600(650)	1300	1000	625	700	G6.0x	1	DN50

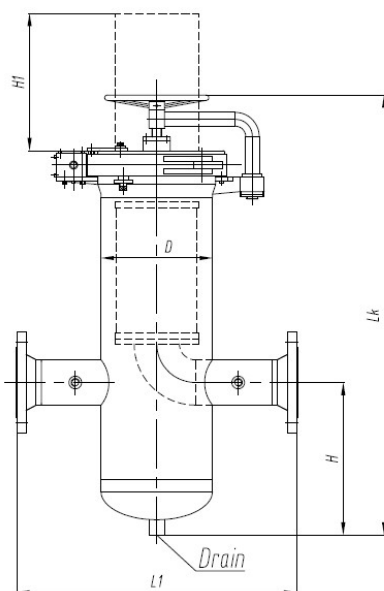


FILTER-C series

Model	Connection	D	L	H	H1	H2	Element Model	Element QTY	Drain
NA-C25-16	DN25	100	200	250	120	125	G0.5x	1	DN15
NA-C32-16	DN32	100	200	250	120	125	G0.5x	1	DN15
NA-C40-16	DN40	125	225	300	165	150	G1.0x	1	DN15
NA-C50-16	DN50	125	225	300	165	150	G1.0x	1	DN15
NA-C65-16	DN65	150	275	350	210	175	G1.5x	1	DN15
NA-C80-16	DN80	200	275	350	210	175	G1.5x	1	DN15
NA-C100-16	DN100	200	300	450	270	225	G2.0x	1	DN25
NA-C125-16	DN125	250	350	500	285	250	G2.5x	1	DN25
NA-C150-16	DN150	300	400	550	320	275	G3.0x	1	DN25

TECHNICAL PARAMETERS

Working Medium	Natural gas\Town gas\Non corrosive gases
Working pressure	<10Mpa
Filter housing material	CS \ SS.....
Filtration Grade	1-3-10-50µm.....
Filter efficiency	99.90%
Filter element material	Polyester fibre / SS.....
Working temperature	(-20℃)-(+60℃)



TECHNICAL PARAMETERS

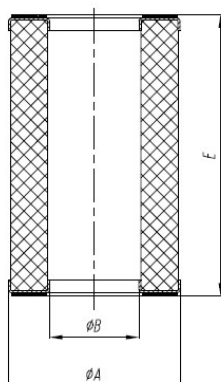
Working Medium	Natural gas\Town gas\Non corrosive gases
Working pressure	<10Mpa
Filter housing material	CS \ SS.....
Filtration Grade	1-3-10-50µm.....
Filter efficiency	99.90%
Filter element material	Polyester fibre / SS.....
Working temperature	(-20℃)-(+60℃)

FILTER-D series

Model	Connection	D	L1	H	H1	Lk	Element Model	Element QTY	Drain
NA-D25-16	DN25	150	450	200	165	550	G1.0x	1	DN15
NA-D32-16	DN32	150	450	200	165	550	G1.0x	1	DN15
NA-D40-16	DN40	150	450	200	165	550	G1.0x	1	DN15
NA-D50-16	DN50	150	450	200	165	550	G1.0x	1	DN15
NA-D65-16	DN65	150	550	200	165	550	G1.0x	1	DN25
NA-D80-16	DN80	200(150)	550	250	210	650	G1.5x	1	DN25
NA-D100-16	DN100	200(250)	600	250	270	750	G2.0x	1	DN25
NA-D125-16	DN125	250(300)	700	300	285	850	G2.5x	1	DN25
NA-D150-16	DN150	300(400)	800	350	320	1150	G3.0x	1	DN25
NA-D200-16	DN200	400(450)	1000	550	475	1700	G4.0x	1	DN50
NA-D250-16	DN250	500(550)	1200	650	470	2100	G5.0x	1	DN50
NA-D300-16	DN300	600(650)	1300	700	625	2350	G6.0x	1	DN50

TECHNICAL PARAMETERS	
Working Medium	Natural gas\Town gas\Non corrosive gases
Working pressure	<10Mpa
Filtration Grade	1-3-10-50µm.....
Filter efficiency	99.90%
Filter element material	Polyester fibre / SS.....
Working temperature	(-20℃)-(+60℃)

Filtration Grade×	
U	1µm
V	3µm
W	10µm
X	50µm



FILTER ELEMENT - G series			
Model	φA (mm)	φB (mm)	E (mm)
G0.5×	80	35	120
G1.0×	95	50	165
G1.5×	120	69	210
G2.0×	165	86	270
G2.5×	200	110	283
G3.0×	252	138	320
G4.0×	299	186	415
G5.0×	390	246	470
G6.0×	475	320	625
G7.0×	595	405	780
G8.0×	674	456	890

# WUXI NICEAIR INDUSTRY PURIFICATION EQUIPEMNT CO.,LTD.

Address: No. 7 Science And Technology Park, Jinshanbei Industry Park, Wuxi, Jiangsu, China

Tel: +86-13951567050

Fax: +86-510-83073170

E-Mail: [kungcf@126.com](mailto:kungcf@126.com)

[niceairfilter@163.com](mailto:niceairfilter@163.com)

Web site : [www.niceair.cn](http://www.niceair.cn)